

DRAFT BEER 2 GO
DISPENSING
SYSTEMS

PEGAS[®]



CONTENTS

- 1 About NPM
- 4 PEGAS
- 6 Save Beer Technology
- 7 PET Solutions
 - Evolution
 - Novotap
 - Sputnik
- 15 Growler & Bottle Solutions
 - CrafTap 3
 - CrafTap Smart
 - CraftPad x6 x4
- 22 Specifications
- 26 Accessoires



ABOUT NPM

NPM company was founded in 1997. Today NPM is an innovative Russian company with the newest production facilities and machinery, based in a very heart of Siberia, city of Novosibirsk. We build our products up from the very beginning. On a spot of 12,000 sq.m. we organized the full-cycle production service, starting from product design to manufacturing and dispatching to our clients.

Dozens of well-experienced designers and product developers work at NPM's product development center. Our manufacturing facility is featured with the newest machinery supplied by the leading Russian and global industrial brands.

NPM produces foam-free beer dispensing systems under brand PEGAS, fresh milk vending systems MilkBox, as well as experimental automated all-season greenhouses. In the year of 2016 we launched NPM Lab, our new business for IT and mobile products. We believe that NPM Lab will help us improve and complement our products and services with internet and mobile features aimed to help our clients run their businesses more efficiently.



Where ideas meet people!

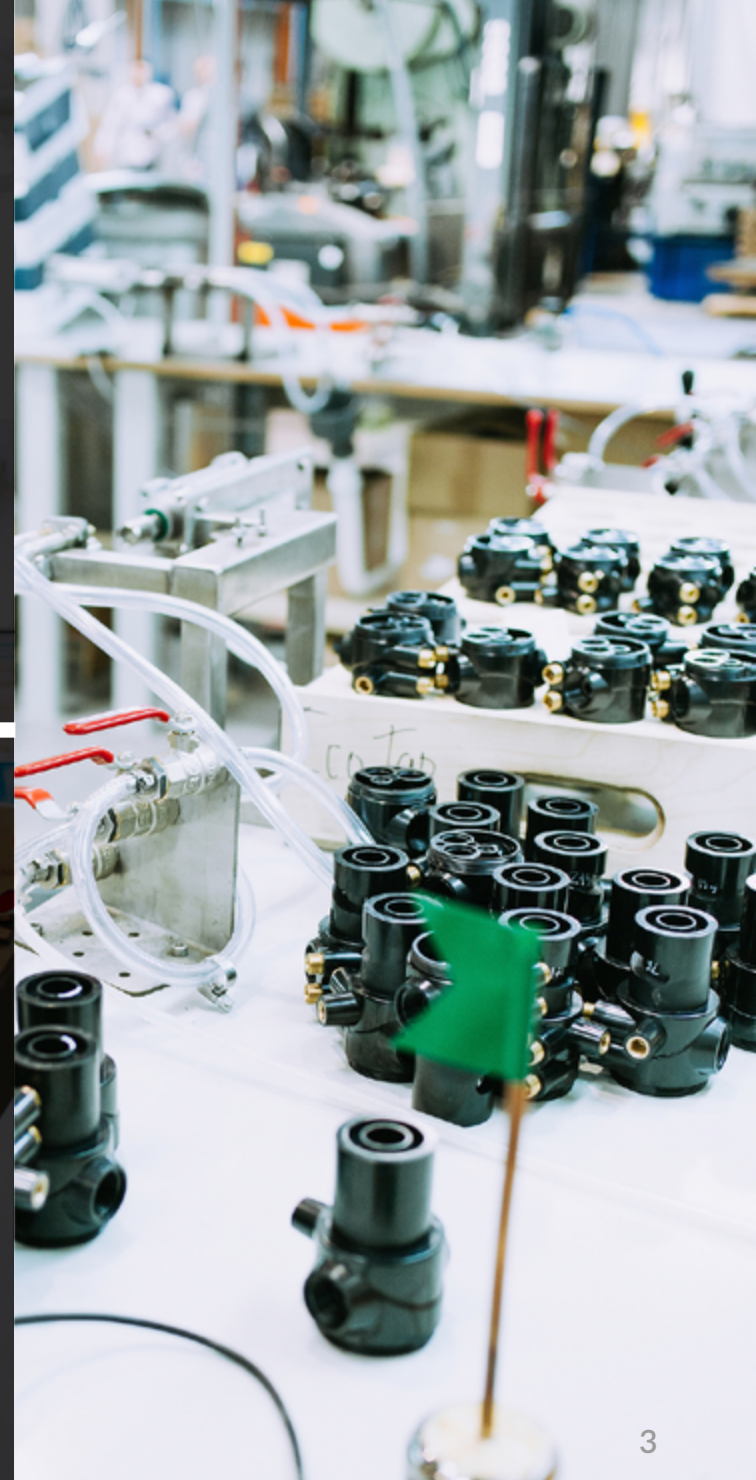
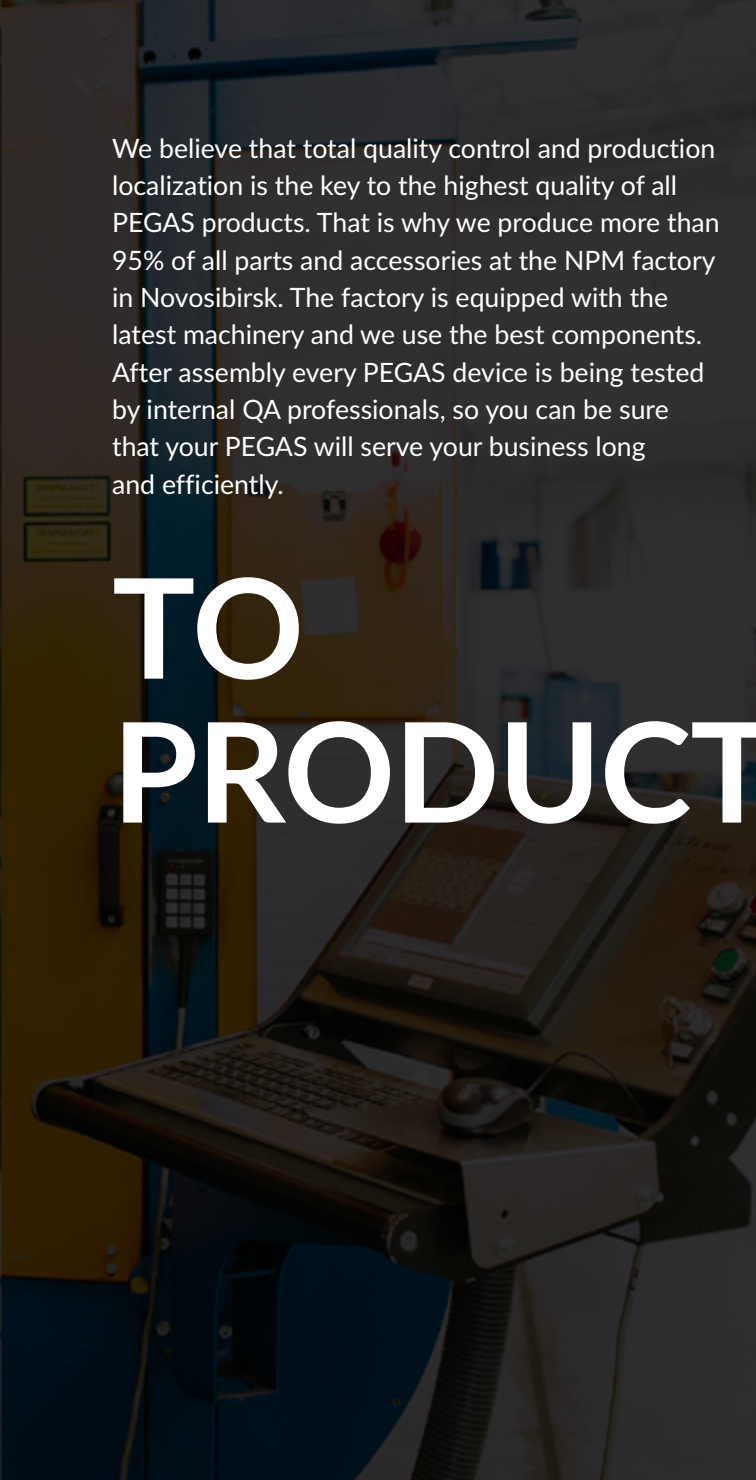
FROM IDEA

All good products begin from good idea. That is why here at NPM we gathered the most advanced team of product developers and designers in the market. PEGAS product teams create new devices with care for outstanding quality and user comfort. Everything matters – from mechanism to unit body outlines, there is no single detail left behind designer's attention. When product concept is ready, it is put under thorough examination and discussion with our clients, and only then it is being moved to production.



We believe that total quality control and production localization is the key to the highest quality of all PEGAS products. That is why we produce more than 95% of all parts and accessories at the NPM factory in Novosibirsk. The factory is equipped with the latest machinery and we use the best components. After assembly every PEGAS device is being tested by internal QA professionals, so you can be sure that your PEGAS will serve your business long and efficiently.

TO PRODUCT



PEGAS®

GLOBAL BRAND #1 FOR DRAFT BEER 2 GO MARKET

NPM is an inventor of a compact foam-free beer dispenser. First PEGAS tap was presented to the market in 2001. It made possible selling fresh draft beer to go without loss of time and beer waste, thus resulting in growth of new business in Russia and many other countries.

Today after 15 years of growth PEGAS sold more than 1,2 million devices, distributing and providing service through the network of 50+ distributors in more than 30 countries worldwide. To cover global operations NPM manages 3 warehouses in Russia, Lithuania and USA.



Many famous and remarkable brands trust PEGAS. Moreover, PEGAS equipment gave the new impulse for growth to the craft beer market.

For instance, only in the USA we supply 500+ craft and mid-size breweries, 200 stores and hundreds of growler-filling stations in 30 states.

IN THE WORLD

Pilzeňský Prazdroj

EFES



HEINEKEN

Carlsberg

Albertsons

SAB
MILLER



Walmart
Save money. Live better.

GUINNESS

MOLSON Coors
here's to responsible choices

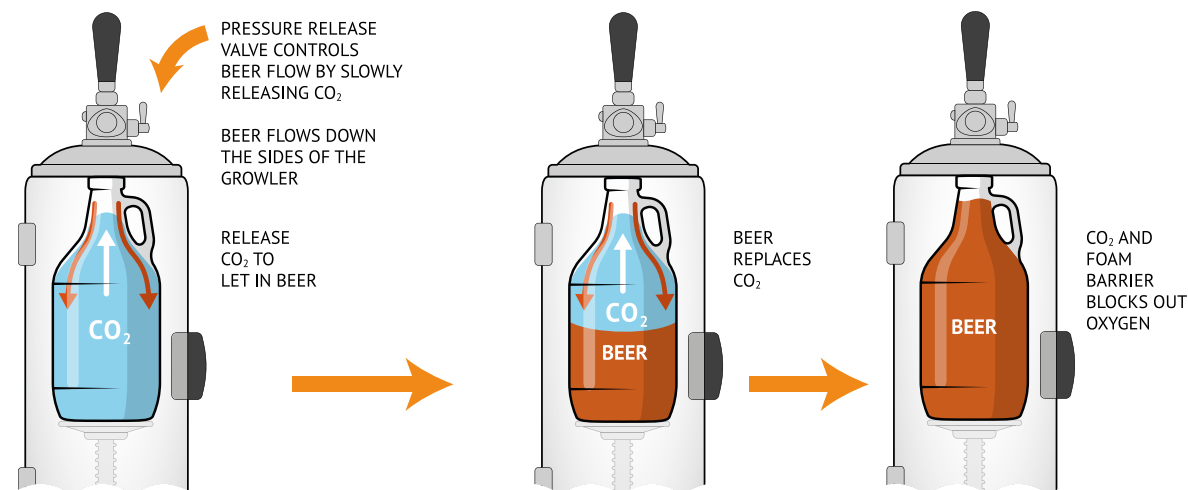
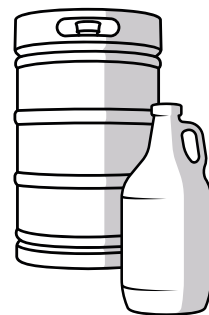
AB InBev

Total Wine
& MORE

... and many more companies and brands worldwide

Counter pressure filling method

All PEGAS devices run with Save Beer Technology, which utilizes principle of counter pressure filling, the same as big breweries use in mass bottling lines. The only difference is that PEGAS is affordable solution which requires only standard beer line inventory such as CO₂ tank and beer cooling unit. Save Beer technology provides PEGAS with 5x faster filling compared to regular beer tap, no foaming and reduced loss of beer as minimal as 2% of keg. Draft beer dispensed with Pegas remains fresh and keeps it's carbonation and taste for up to 45 days of shelf life due to pressurized filling with CO₂*



All beer dispensing process fully isolated from atmosphere oxygen. This method allows to save original taste of beer and increase storage time.

*According to independent survey conducted by The Growler Station (USA)

P.E.T. SOLUTIONS

BUILD
NEW MARKETS
WITH PEGAS



THE EASY WAY TO START BEER²GO BUSINESS

PEGAS Evolution tap is a functional modern beer dispenser which allows to fill PET bottles using a Counter Pressure Filling method. It is made of high-quality ABS plastic and provides more than 100 000 usage cycles. Modern design meets maximal functionality and outstanding reliability in this device.

Product ID 131901



NOVOTAP 2.0

PEGAS Novotap provides fast and foam-free beer dispensing into plastic bottles, combined with outstanding design and solid metal look. With its metal trim, Novotap perfectly blends into interior of any beer bar or restaurant. The device is operated like a regular beer tap – push handle to release CO₂, pull to make a fill.

Product ID 108905



PEGAS Novotap perfectly pairs with regular beer tap PEGAS B5. Being set on beer column Dragon, Novotap combined with B5 provides a perfect combination of fast bottle fill with sales by mug, so your consumers would have a degustation before they choose beer for takeaway.

Product ID 105003



SPUTNIK



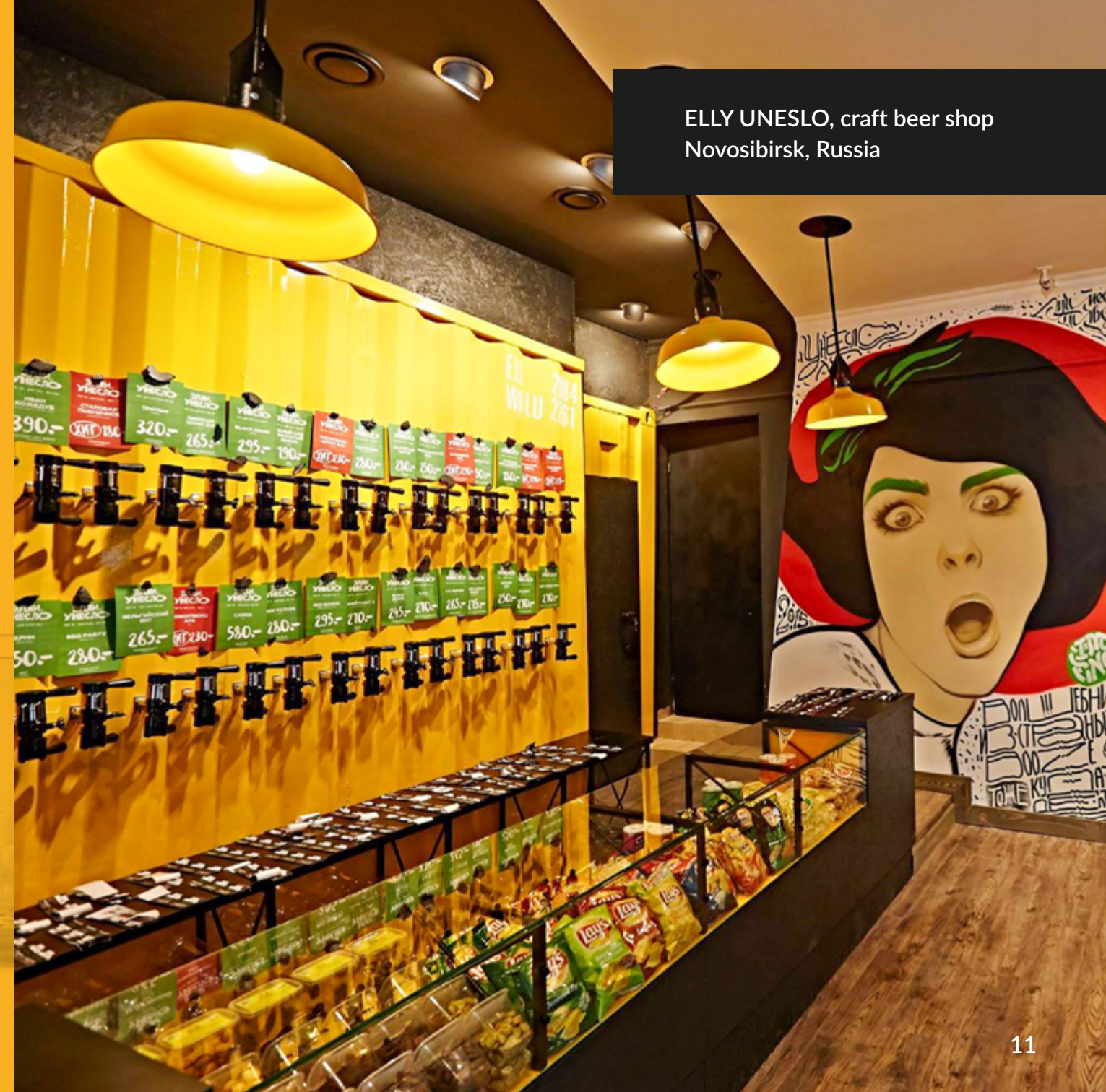
Unique device for dispensing beer from PET bottles to mug

This device is designed for bars, beer restaurants, beer fests and every other place, where you need to serve to a huge quantity of visitors fast. What exactly you need: a stock of beer in PET bottles and those PEGAS Sputnik devices. When your guests come to the point- just set up the Sputnik onto the table and install the bottle with beer into it! Every visitor can fill a mug from Sputnik (do not forget to change the bottle when it is empty) PET-bottles dispense is held using PEGAS foam-free dispensing device, which is up to 5 times faster than using a standard beer tower with a regular tap.

PEGAS Sputnik is compatible with any PET bottle (PCO or BPF bottleneck) and any volumes. If you would like to use a 5L bottle, just use the adapter PEGAS Sputnik 5+.

Draft beer goes fun.
Don't let your guests wait!

Product ID 129900



ELLY UNESLO, craft beer shop
Novosibirsk, Russia



CRAFT BEER BAR
Budapest, Hungary



LIQUOR DEPOT
Lake Forest, CA, USA

GROWLER & BOTTLE SOLUTIONS

WHAT IS GROWLER?

Growler is a reusable and refillable glass, ceramic or metal bottle with proper cap. Popularity of growlers come along with the growth of craft beer market. Many beer varieties are only available in kegs, not bottles. And consumers who want to enjoy their favorite beer at home would definitely want have their beer poured and stored properly. This is how growler filling stations work across the USA and some European countries. They pour fresh craft beer from kegs into growlers and sell them to clients for takeaway.

Growlers require a proper filling process. PEGAS growler filling systems with Save Beer Technology are perfect for that purpose. Utilizing counter pressure method, PEGAS growler filling device fills growler with CO₂, pushing air out and creating pressure equal to that in the keg. That is why with PEGAS beer flows into growler smoothly and without foaming. The beer is kept away from contact with air, remaining fresh and originally carbonated. That is why clean and properly filled growler has 30-45 days of shelf life.



CRAFTAP 3

16



FOAM-FREE DISPENSING INTO GROWLERS

PEGAS Craftap 3.0 is an unique advanced pressurized filler both for glass and PET growlers. It's allow to fill a beer fast, foam-free with reduced waste and 30-45 days shelf life*. It designed with the technology to fill both glass and plastic growlers or bottles. With the counter pressure filling technology, the system dispenses draft beer that consistently holds its integrity from keg to consumption.

What's new?

- Fully redesigned. The CraftTap 3 has advanced features which guarantee increased operational convenience, high reliability, and lower maintenance.
- Updated functionality. By implementing new materials, we have designed an efficient lock system in the device which provides users with highest safety level while performing the filling procedure.
- Versatility. By refining the adjustable bottle platform within the product, it is now quick and easy to adjust the product to fill any size bottle in just a few seconds.
- Branding and customization options available through the removable back panel specifically designed for enhanced branding opportunities.



Product ID 132900

*According to independent survey conducted by The Growler Station (USA)



17

COMING SOON

CRAFTAP SMART

The first automated beer-to-go dispenser in the market!

CrafTap Smart combines all advantages of CrafTap 3 with a fully automated dispense. With the electronic control CrafTap Smart is designed for quick foam-free beer dispensing from kegs into growlers and bottles. Like any PEGAS device, CrafTap Smart is built with the Save Beer Technology. It benefits in minimized beer leftovers and drainage loss, preserving beer taste and carbonization at original level, thus providing consumers with freshness and taste of draft beer at any moment.

FAST CLEVER ACCURATE

Filling starts with a press of a button and the rest is done by electronics. So now there is no need in watching after dispensing, thus making possible filling of non-transparent bottles, such as aluminum or ceramic growlers and cans. CrafTap Smart has an attractive and ergonomic design with enhanced options for branding.



**Control panel provides user with
variety of settings and features:**

- Presetting of 3 different fill volumes
- Flow speed calibration depending on beverage density
- Selection of measuring units (metric or imperial)

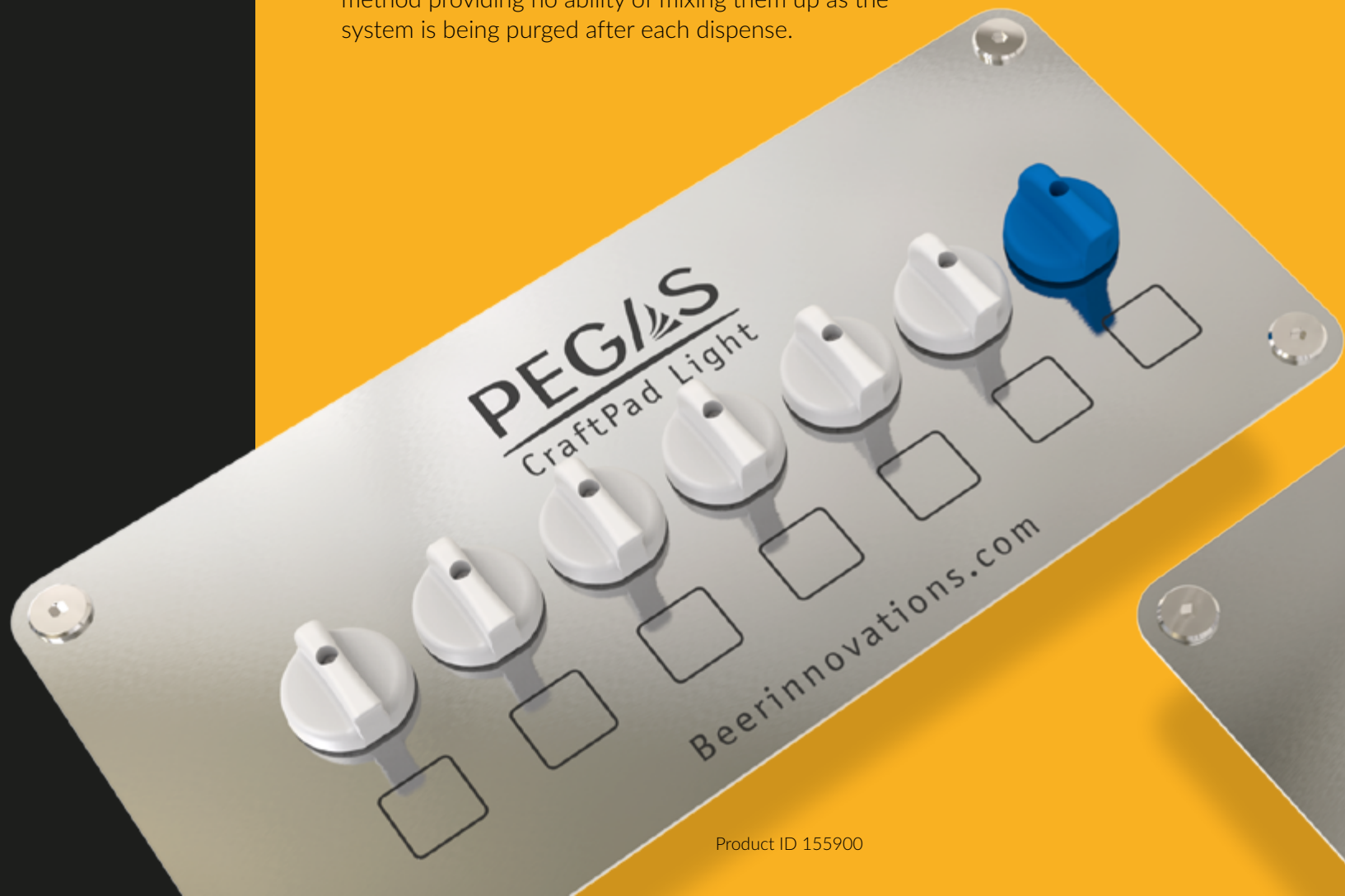
CRAFTPAD

x6

CraftPad is a beer line switcher specially designed for CraftTap dispensing device.

This equipment was designed in order to expand the PEGAS CraftTap features and allows a brewmaster to dispense up to six different sorts of beer or another foamy beverage through one PEGAS Crafttap!

Different beer sorts are being poured using a special method providing no ability of mixing them up as the system is being purged after each dispense.



Product ID 155900

x4

The top panel of PEGAS CraftPad can be installed into either horizontal or vertical surface, such as bar desk or wall. The equipment fits any interior and lets you economize the room in a venue.

Switch beer lines
without mixing!

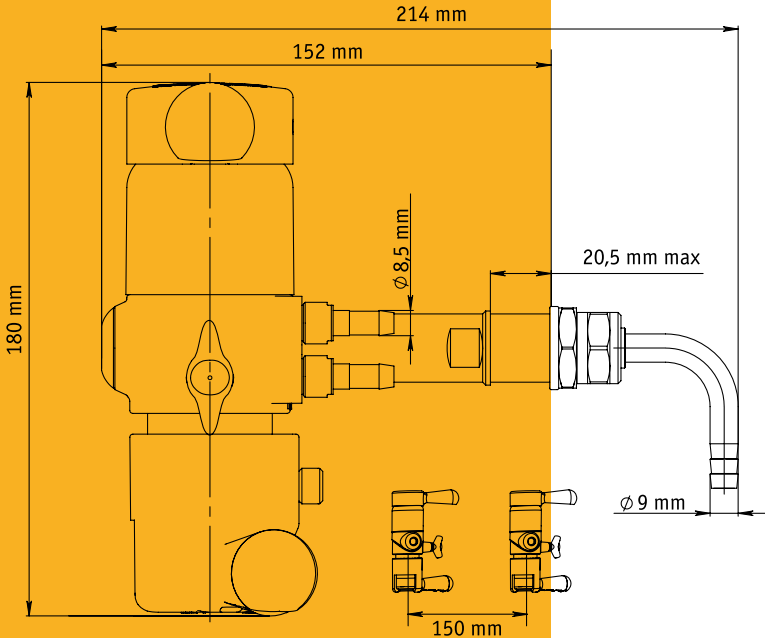


Product ID 155902

PEGAS vs. REGULAR TAP

	PEGAS	Regular Tap
Estimated waste per keg	Less than 2%	25-35%
Estimated shelf life after fill	Up to 45 days	2 days
Sealed filling process	✓	✗
Fills from bottom of growler	✓	✗
Fills different sized growlers	✓	✓
Allows pre fill before sale (Where allowed)	✓	✗
Better customer experience	✓	✗

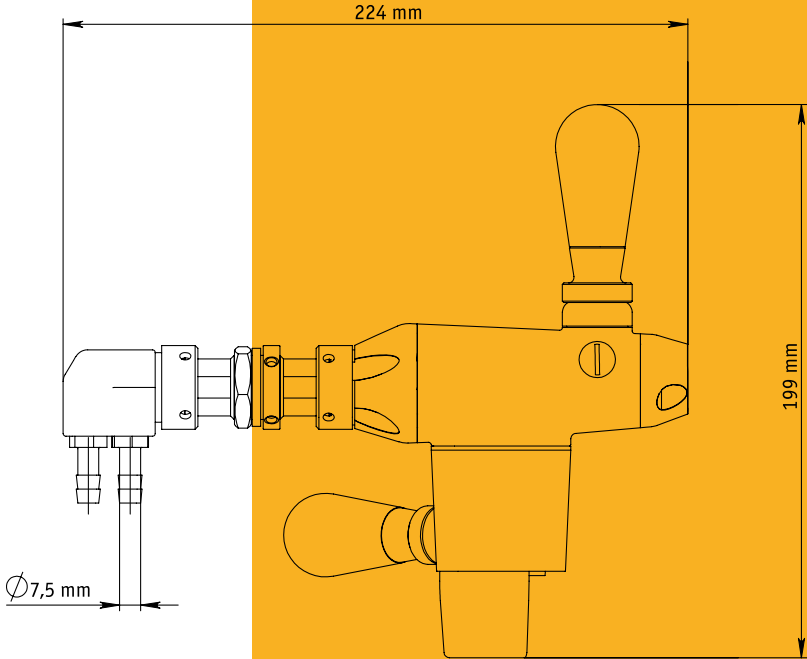
EVOLUTION



Device key features	
Filling capacity depends on temperature, beer quality, and operator experience	45-120 L/h
Material	ABS plastic
CO ₂ Pressure to keg	12-16 PSI
CO ₂ Flow rate to create counter pressure	12-16 PSI
Compatible bottle necks	BPF, PCO 1810, PCO 1881
Outer/ Inner supply hose diameter	12 / 7 mm
Device weight	0,715 kg

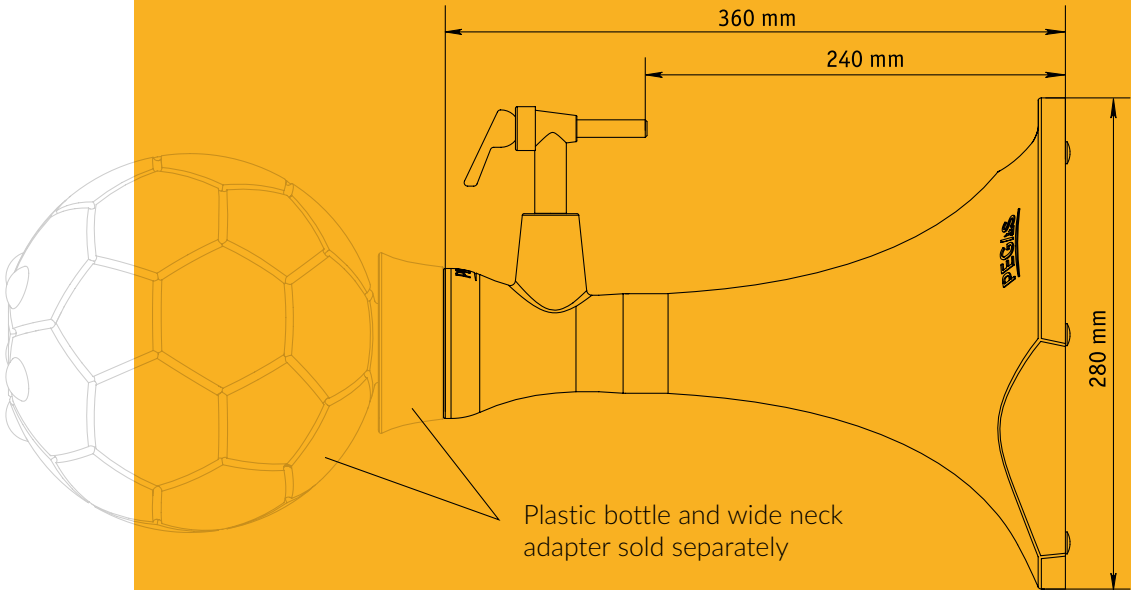
1 pcs T-Joint, 6 pcs clamp are included.
Hoses are not included.

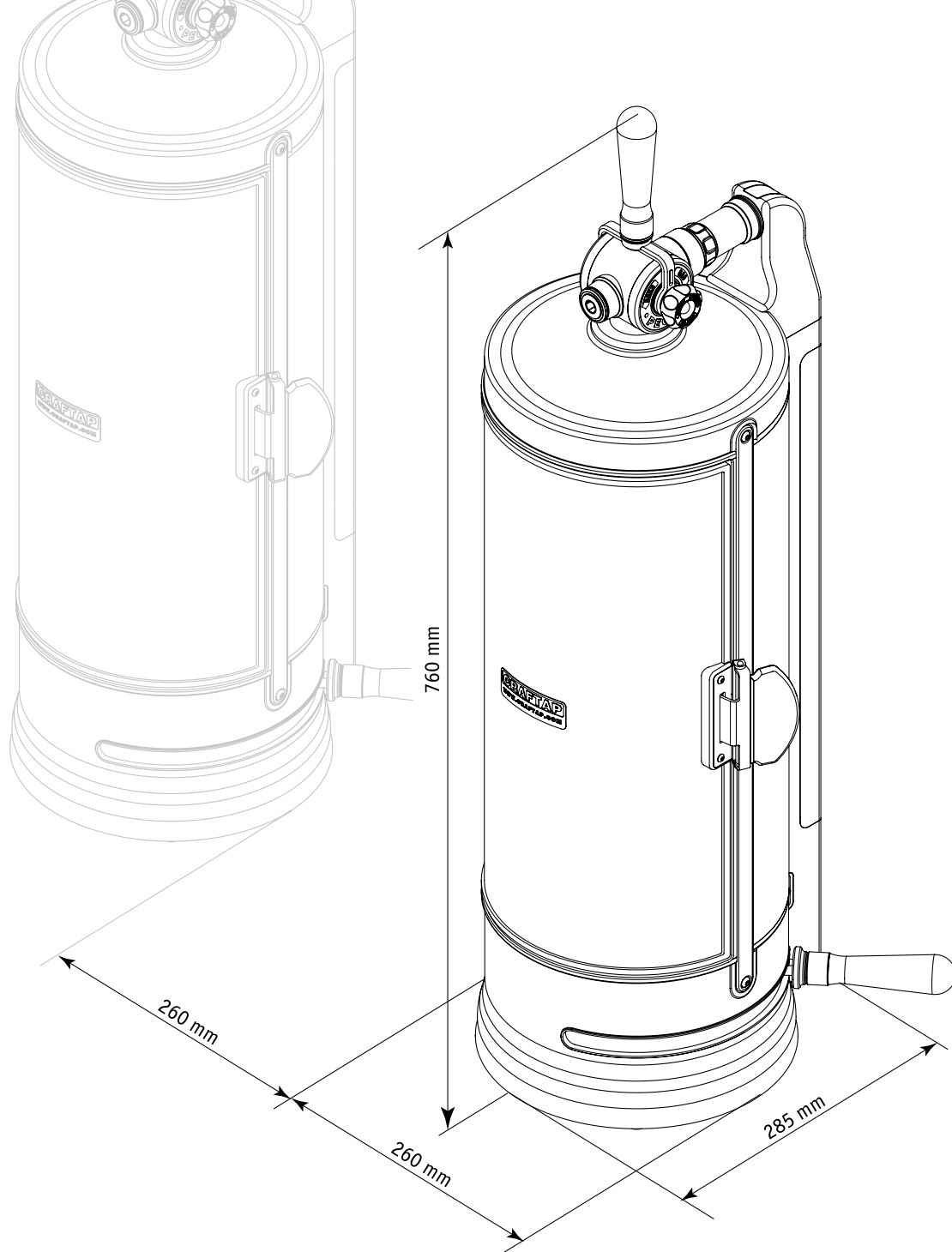
NOVOTAP 2.0



Device key features	
Filling capacity depends on temperature, beer quality, and operator experience	45-120 L/h
Material	Metal
CO ₂ Pressure to keg	12-16 PSI
CO ₂ Flow rate to create counter pressure	12-16 PSI
Compatible bottle necks	BPF, PCO 1810
Outer/ Inner supply hose diameter	12 / 7 mm
Device weight	2,1 kg

1 pcs T-Joint is included. Clamps and hoses are not included.





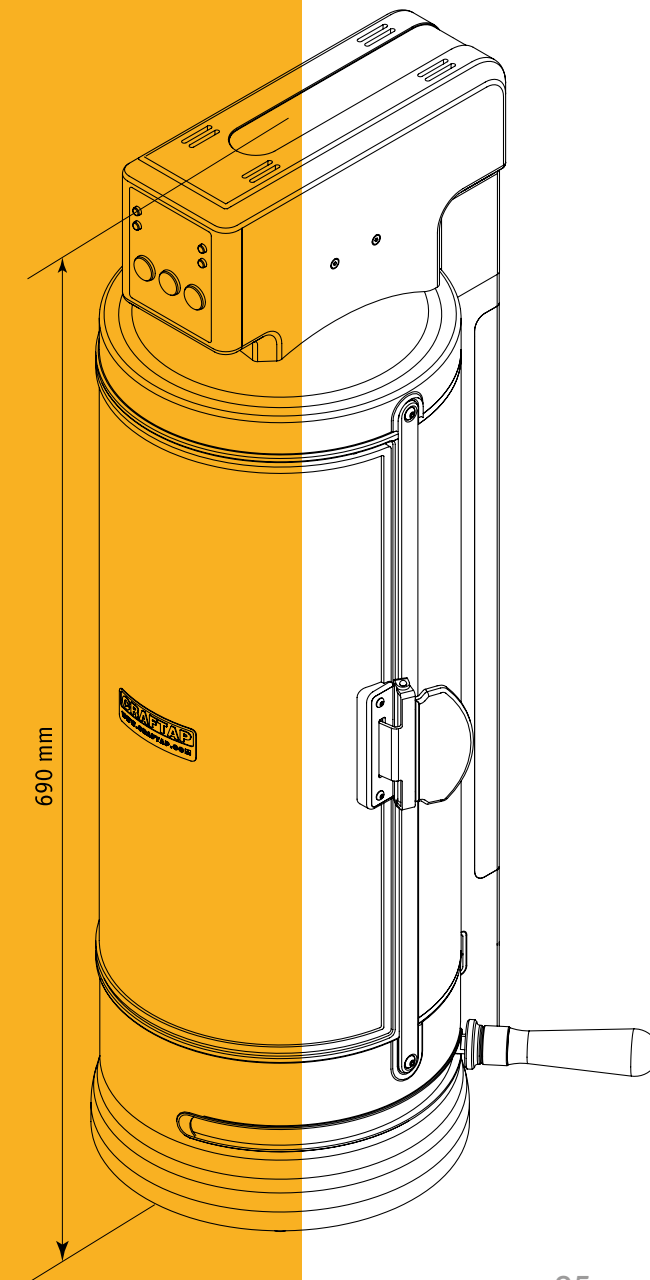
CRAFTAP 3 / CRAFTAP SMART

Filling capacity depends on tmperature, beer quality, and operator experience		45-120 L/h
CO ₂ Pressure to keg		12-16 PSI
CO ₂ Flow rate to create counter pressure		12-16 PSI
Outside supply hose dia.		12 mm
Inside supply hose dia.		7 mm
Power Output		100-240 V
		50-60 Hz
		0.5 Amps
Power Cord Length		1.80 m
Device Weight	Net	12 Kg
	Gross	13 Kg

Bottle Compatibility



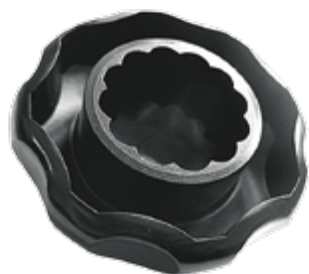
Bottle height	217-310 mm
Max. bottle diameter (incl. handle)	165 mm
Outer bottle neck diameter	26-57 mm
Min. inner bottle neck diameter	17 mm
Volume	0,33-2,0 l
Max. bottle pressure	0,5 Mpa





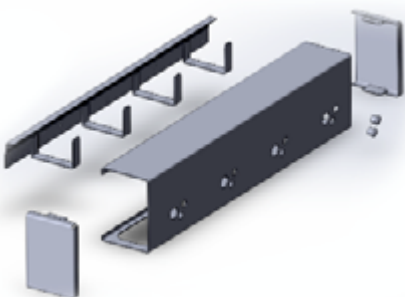
Connectors for Novotap 2.0

Line connectors (left and right) help to connect Novotap to horizontally oriented beer and gas lines and drainage.



PEGAS Twist

A gadget intended for the convenient turning of plastic caps on PET-bottles. It is made of solid ABS plastic which ensures its firmness and reliability.



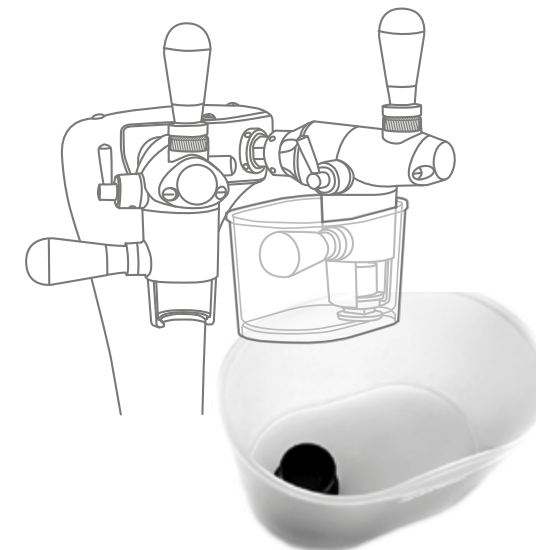
PEGAS Atlant

A unit allows to mount PEGAS line devices onto walls. There is no need to drill holes for every single device: all the necessary hoses are hidden in the special recesses inside the PEGAS Atlant.

PEGAS Atlant guarantees a secure and elegant quality of mounting. There are units for between four and six devices.

Pegas Pool (for all PET solutions)

A washing tank for the bottle holder mechanism of the foam-free dispensing devices, produced under the trademark PEGAS. Compatible with all Pegas PET solutions.



PEGAS CraftTube

Adapter for PEGAS CraftTap beer line cleaning.

- Provides secure, efficient and convenient maintenance of PEGAS CraftTap.
- increases the lifetime of the equipment.
- Regular cleaning prevents bacteria and beerstone formation.
- Easy and convenient setting to the tap of PEGAS CraftTap.
- Compact and light, easy to store and carry.



SECTION

Sergey Shtercer

Area manager East Europe, Asia, Africa

+7 383 211 90 49, ext. 444

+7 962 827 2887

Skype: Shperc1

E-mail: shtercer_sv@npgmgroup.ru

Irina Elizaryeva

Area manager North America, Europe

+7 383 211 90 49, ext. 495

+7 923 135 48 72

Skype: knopec1

E-mail: elizareva_iv@npgmgroup.ru

Oleg Nabokov

Area manager Latin America, Europe.

+7 383 211 90 49, ext..498

+7 999 4500 234

WhatsApp: +7 910 458 9228

Skype ID: oleg.npm

E-mail: nabokov_oa@npgmgroup.ru

PEGAS[®]



www.beerinnovations.com

www.npm-group.com

e-mail: sales@npgmgroup.com

phone: +7 383 211 9049

Bolshaya st. 254/1,
Novosibirsk, Russia.

